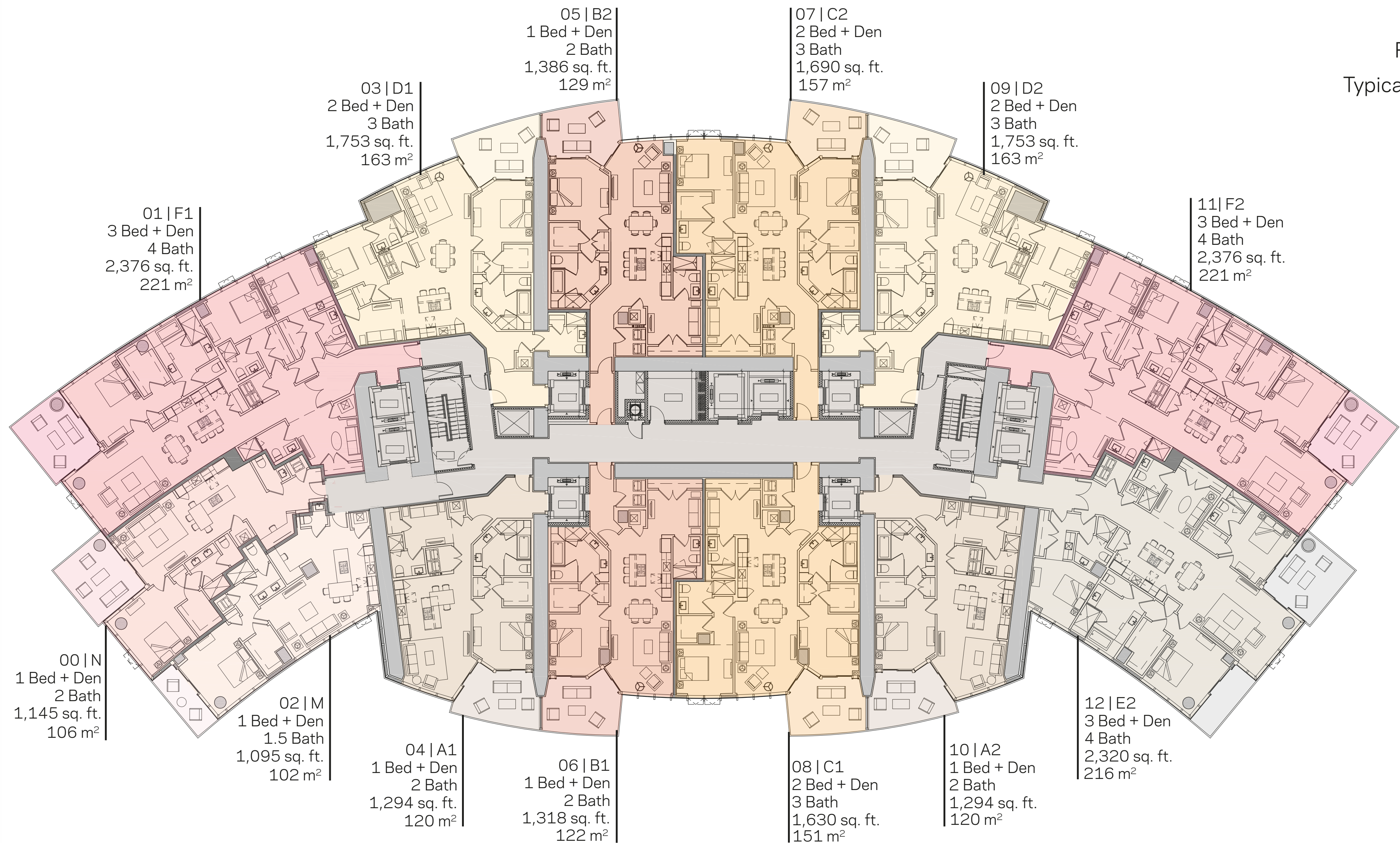


BUILDING OVERVIEW



700 Feet

500+ Residences

Residences: Levels 8 - 54

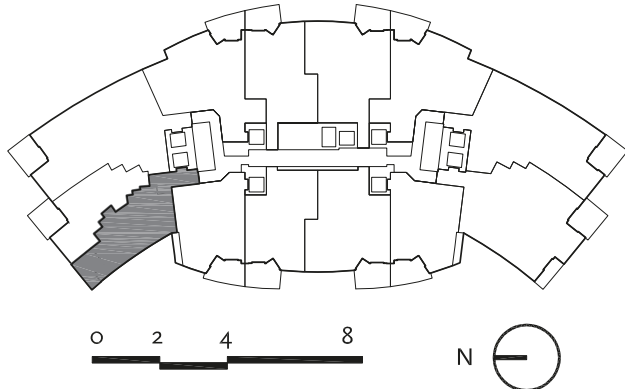
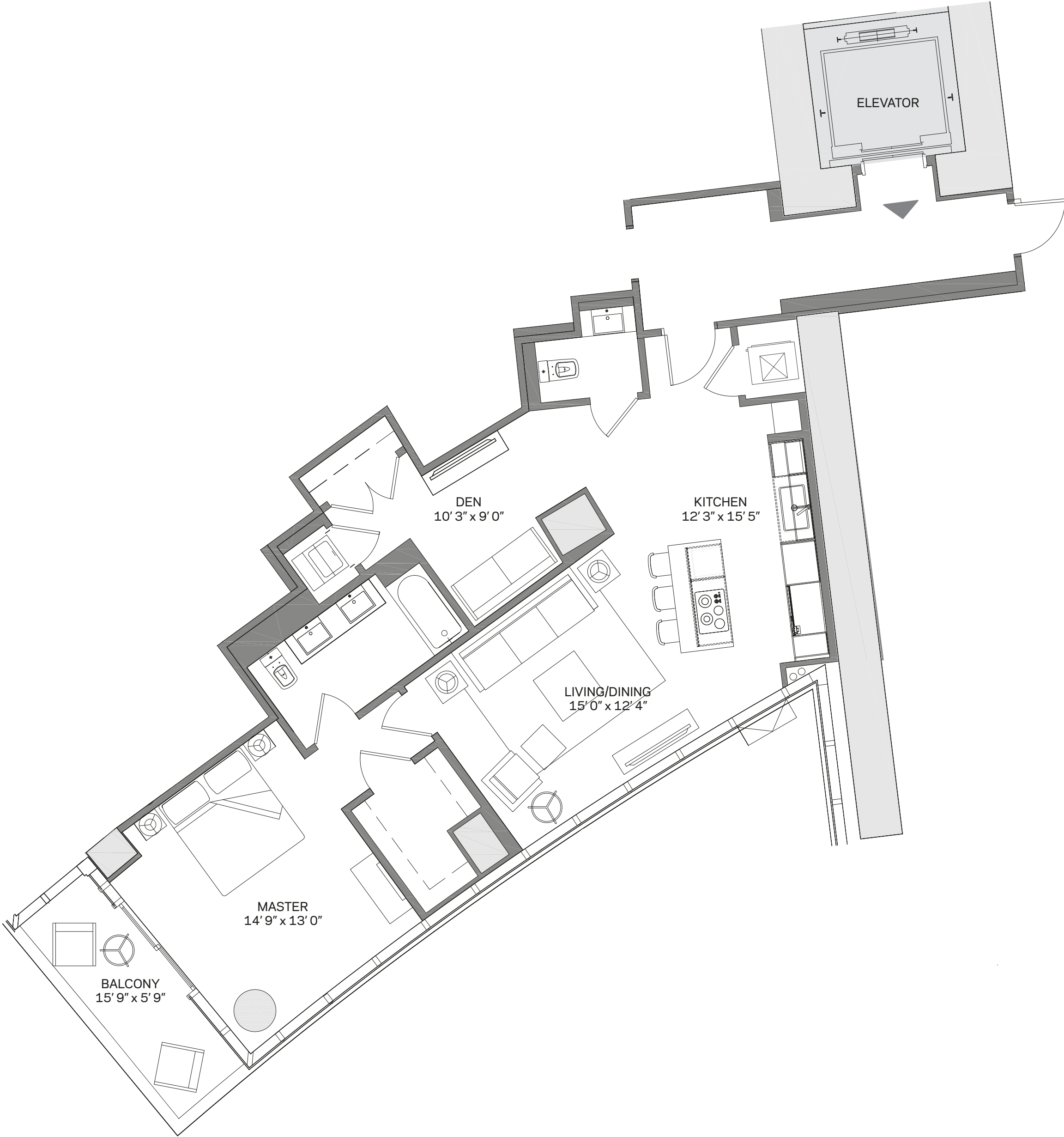
Typical Floorplate | Level 8 - 45


Typical Residence Types

- 1 Bed + den | 1.5 Bath
- 1 Bed + den | 2 Bath
- 2 Bed + den | 3 Bath
- 3 Bed + den | 4 Bath

1 Bedroom + Den | 1.5 Bath

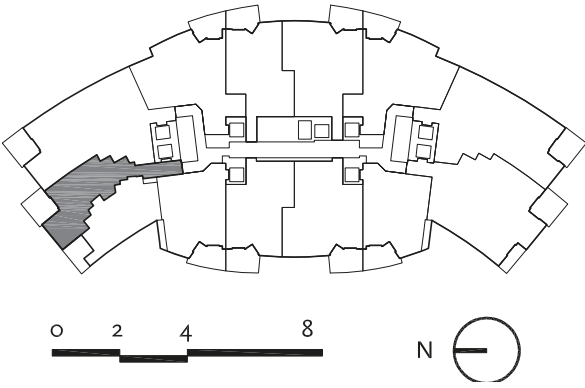
Total:	1,186 sq. ft.	110 m ²
Interior:	1,095 sq. ft.	102 m ²
Outdoor:	91 sq. ft.	9 m ²



 These drawings are conceptual only and are for the convenience of reference. They should not be relied upon as representations, express or implied, of the final detail of the residences. Units shown are examples of unit types and may not depict actual units. Stated square footages are ranges for a particular unit type and are measured to the exterior boundaries of the exterior walls and the centerline of interior demising walls and in fact vary from the area that would be determined by using the description and definition of the "Unit" set forth in the Declaration (which generally only includes the interior airspace between the perimeter walls and excludes interior structural components).

1 Bedroom + Den | 2 Bath

Total: 1,346 sq. ft. | 125 m²
Interior: 1,145 sq. ft. | 106 m²
Outdoor: 201 sq. ft. | 19 m²



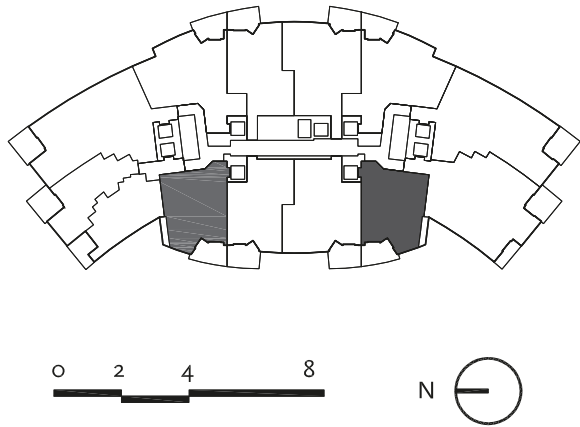
These drawings are conceptual only and are for the convenience of reference. They should not be relied upon as representations, express or implied, of the final detail of the residences. Units shown are examples of unit types and may not depict actual units. Stated square footages are ranges for a particular unit type and are measured to the exterior boundaries of the exterior walls and the centerline of interior demising walls and in fact vary from the area that would be determined by using the description and definition of the "Unit" set forth in the Declaration (which generally only includes the interior airspace between the perimeter walls and excludes interior structural components).


1 Bedroom + Den | 2 Bath

Total:	1,491 sq. ft.	138 m ²
Interior:	1,294 sq. ft.	120 m ²
Outdoor:	197 sq. ft.	18 m ²



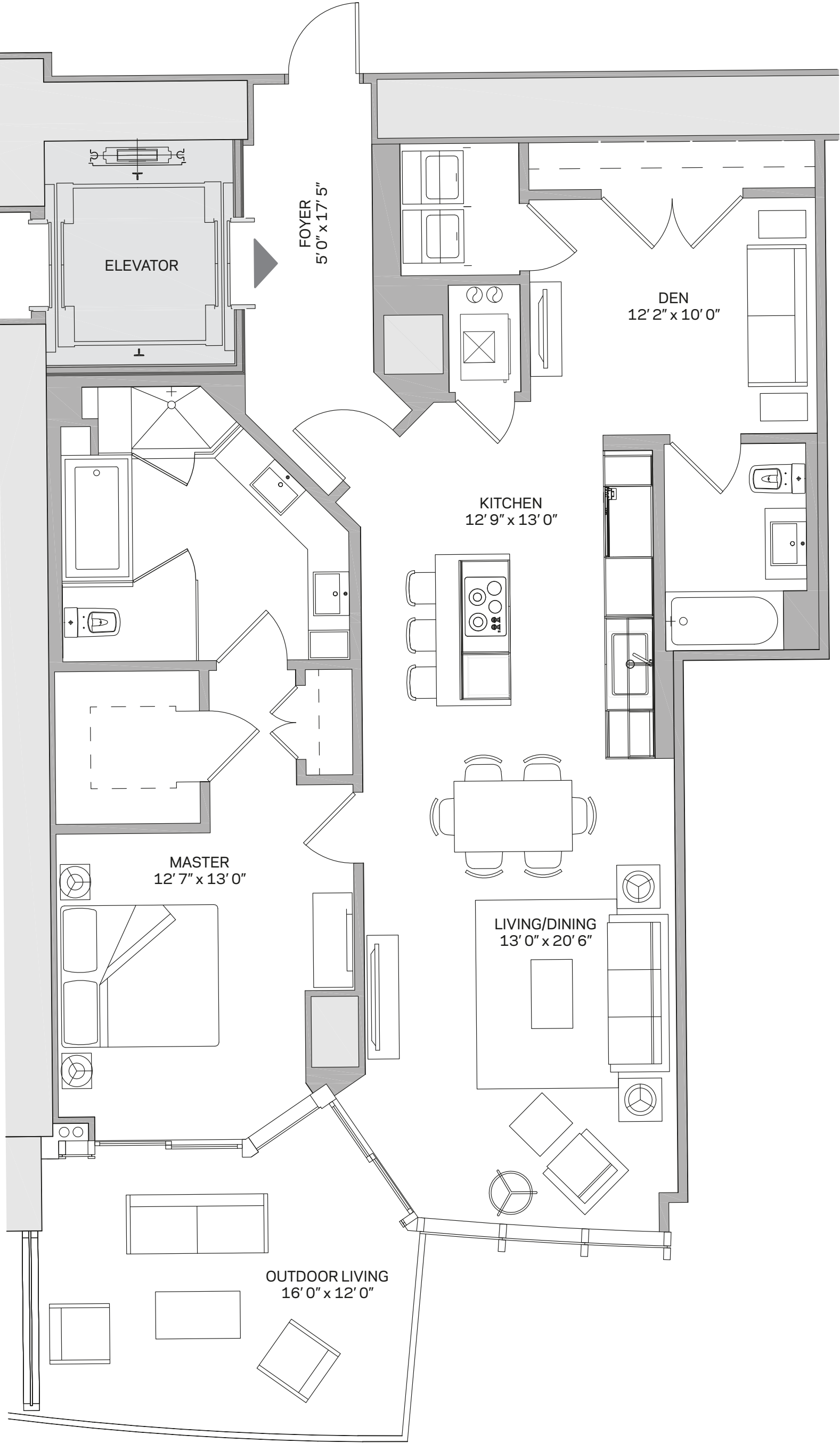
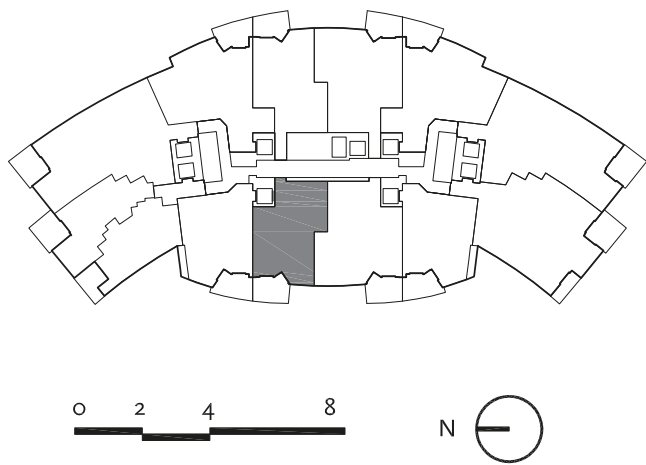
RESIDENCE A1 | 04
Reverse: Residence A2 | 10



 These drawings are conceptual only and are for the convenience of reference. They should not be relied upon as representations, express or implied, of the final detail of the residences. Units shown are examples of unit types and may not depict actual units. Stated square footages are ranges for a particular unit type and are measured to the exterior boundaries of the exterior walls and the centerline of interior demising walls and in fact vary from the area that would be determined by using the description and definition of the "Unit" set forth in the Declaration (which generally only includes the interior airspace between the perimeter walls and excludes interior structural components).

1 Bedroom + Den | 2 Bath

Total: 1,523 sq. ft. | 141 m²
Interior: 1,318 sq. ft. | 122 m²
Outdoor: 205 sq. ft. | 19 m²



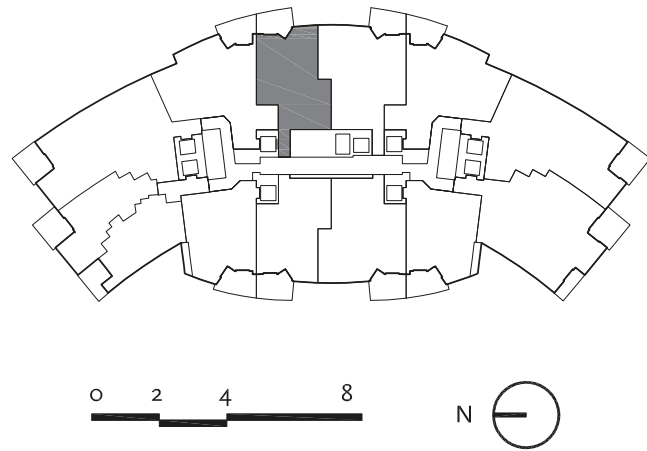
RESIDENCE B1 | 06



These drawings are conceptual only and are for the convenience of reference. They should not be relied upon as representations, express or implied, of the final detail of the residences. Units shown are examples of unit types and may not depict actual units. Stated square footages are ranges for a particular unit type and are measured to the exterior boundaries of the exterior walls and the centerline of interior demising walls and in fact vary from the area that would be determined by using the description and definition of the "Unit" set forth in the Declaration (which generally only includes the interior airspace between the perimeter walls and excludes interior structural components).

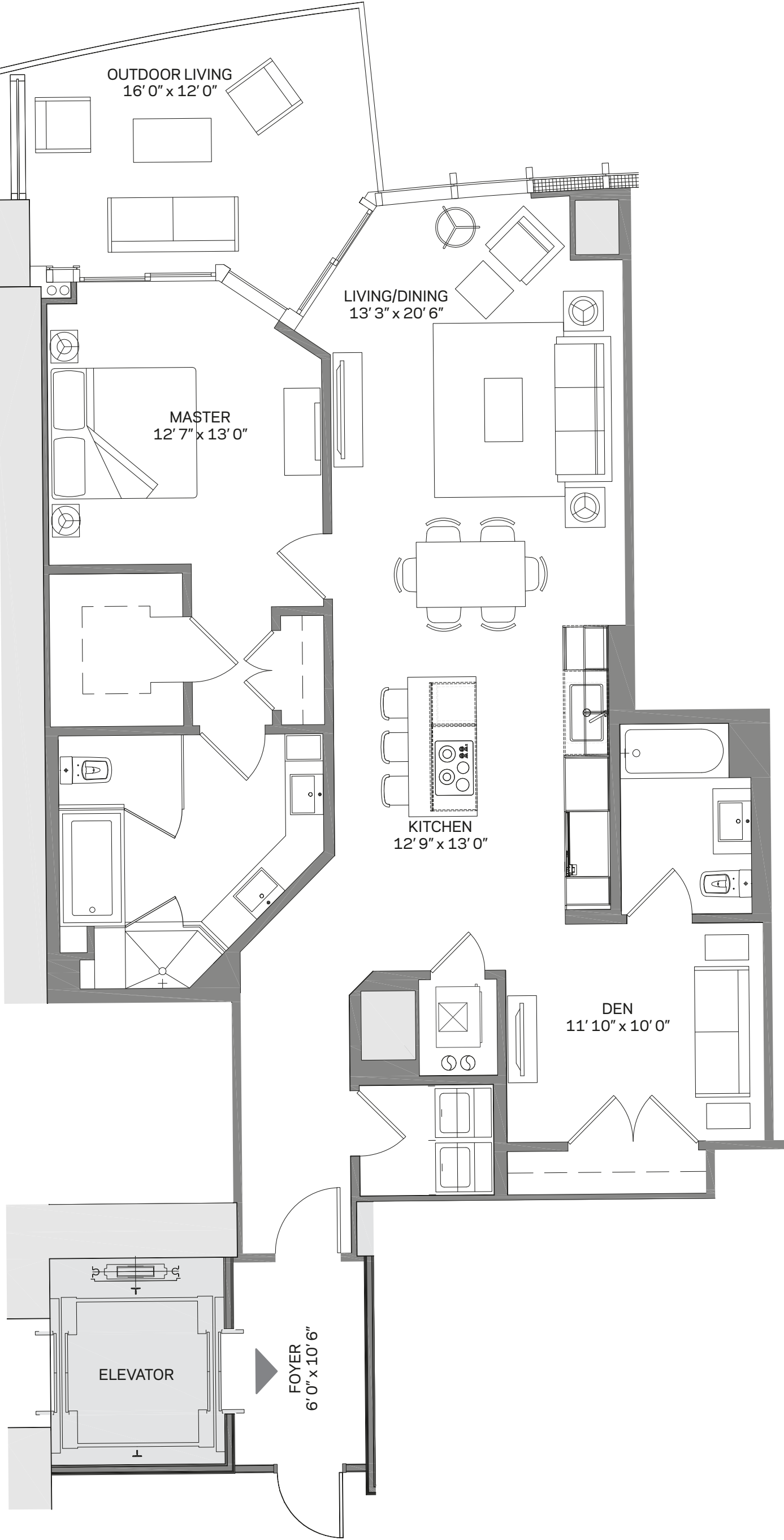
1 Bedroom + Den | 2 Bath

Total: 1,573 sq. ft. | 146 m²
Interior: 1,386 sq. ft. | 129 m²
Outdoor: 187 sq. ft. | 17 m²



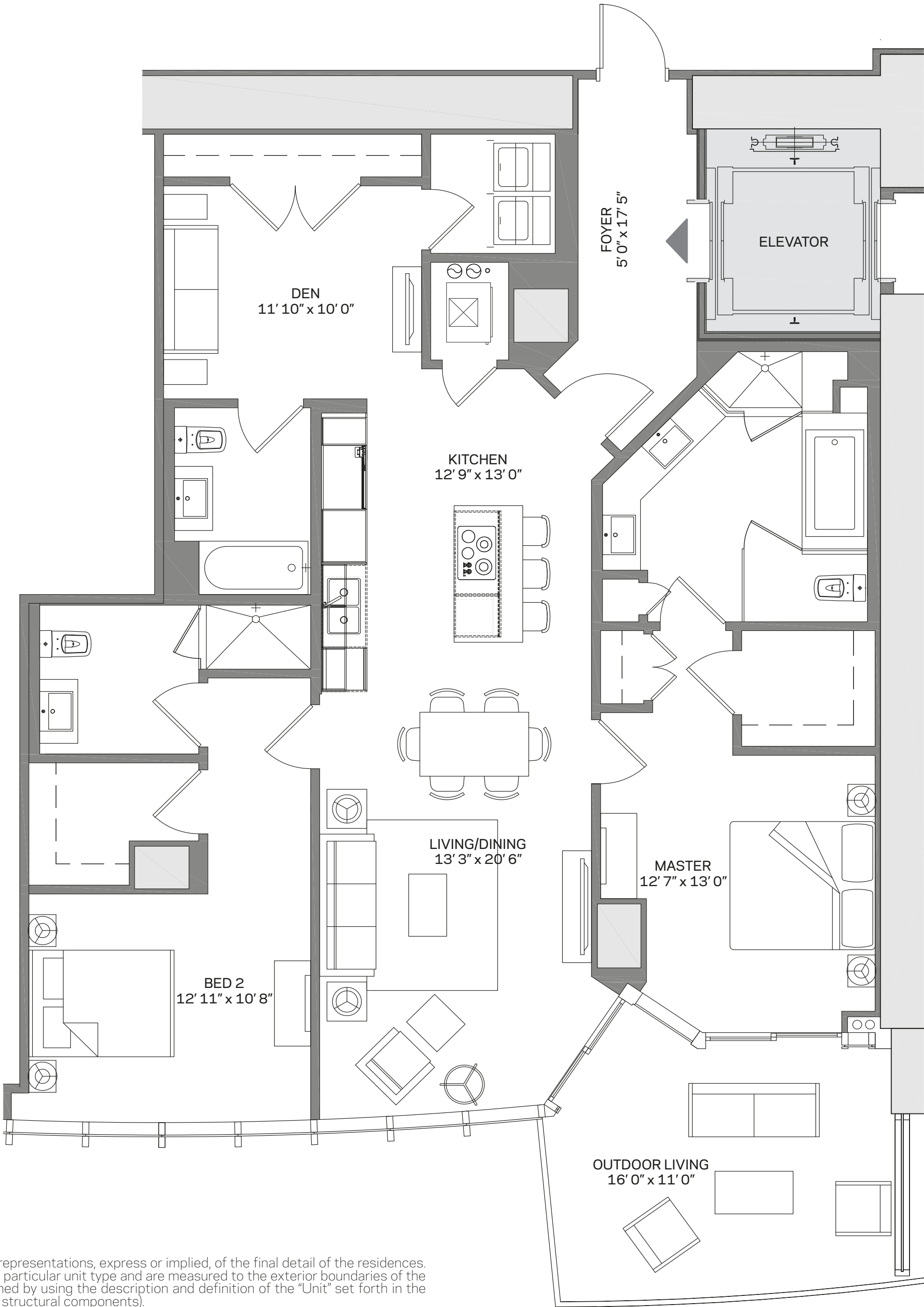
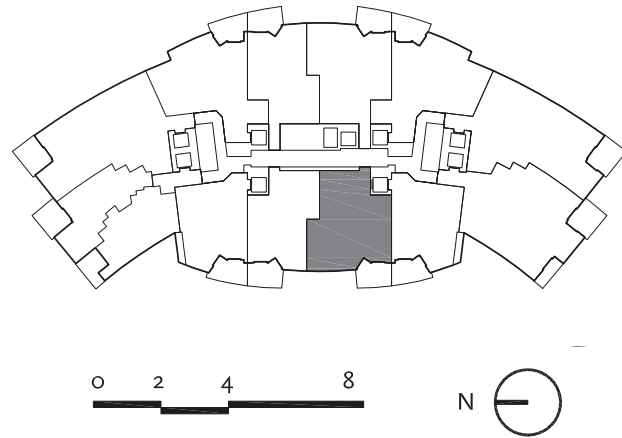
These drawings are conceptual only and are for the convenience of reference. They should not be relied upon as representations, express or implied, of the final detail of the residences. Units shown are examples of unit types and may not depict actual units. Stated square footages are ranges for a particular unit type and are measured to the exterior boundaries of the exterior walls and the centerline of interior demising walls and in fact vary from the area that would be determined by using the description and definition of the “Unit” set forth in the Declaration (which generally only includes the interior airspace between the perimeter walls and excludes interior structural components).


RESIDENCE B2 | 05



2 Bedroom + Den | 3 Bath

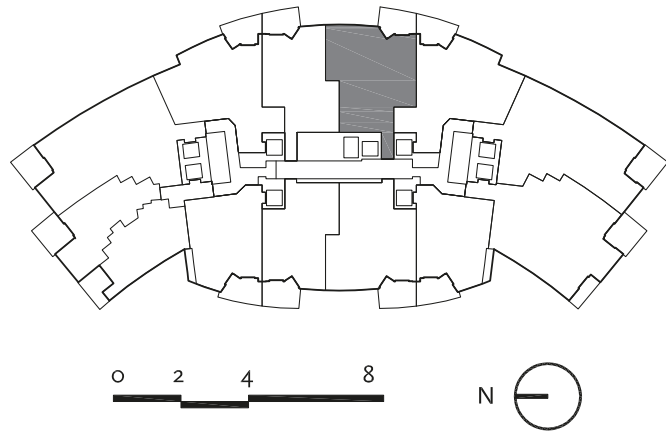
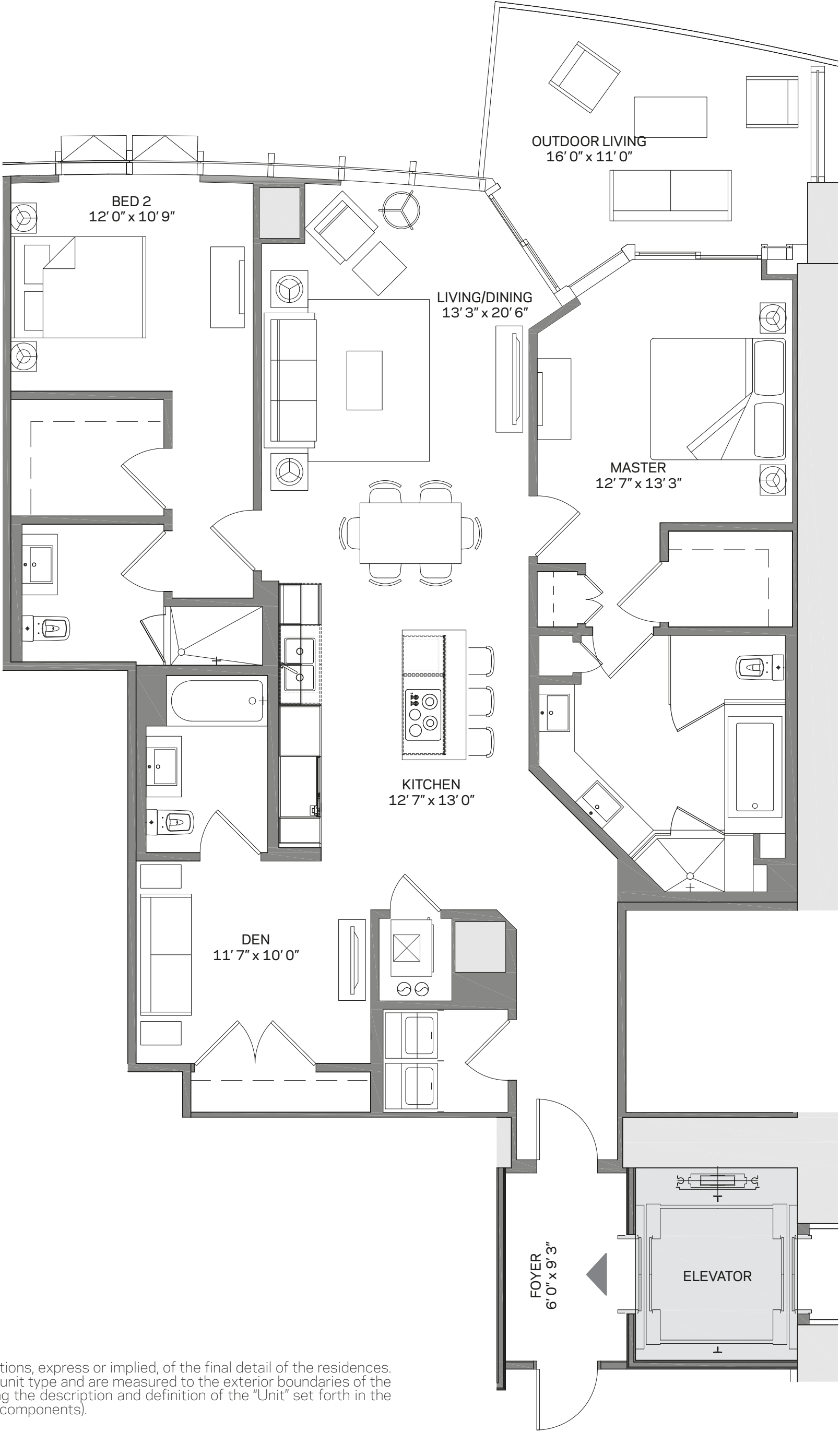
Total: 1,835 sq. ft. | 170 m²
Interior: 1,630 sq. ft. | 151 m²
Outdoor: 205 sq. ft. | 19 m²




 These drawings are conceptual only and are for the convenience of reference. They should not be relied upon as representations, express or implied, of the final detail of the residences. Units shown are examples of unit types and may not depict actual units. Stated square footages are ranges for a particular unit type and are measured to the exterior boundaries of the exterior walls and the centerline of interior demising walls and in fact vary from the area that would be determined by using the description and definition of the "Unit" set forth in the Declaration (which generally only includes the interior airspace between the perimeter walls and excludes interior structural components).

2 Bedroom + Den | 3 Bath

Total: 1,877 sq. ft. | 174 m²
Interior: 1,690 sq. ft. | 157 m²
Outdoor: 187 sq. ft. | 17 m²



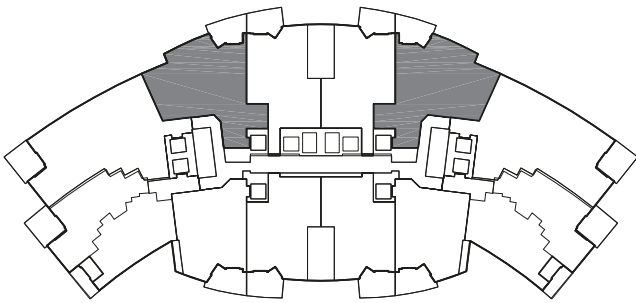
 These drawings are conceptual only and are for the convenience of reference. They should not be relied upon as representations, express or implied, of the final detail of the residences. Units shown are examples of unit types and may not depict actual units. Stated square footages are ranges for a particular unit type and are measured to the exterior boundaries of the exterior walls and the centerline of interior demising walls and in fact vary from the area that would be determined by using the description and definition of the "Unit" set forth in the Declaration (which generally only includes the interior airspace between the perimeter walls and excludes interior structural components).


RESIDENCE D1 | 03

Reverse: Residence D2 | 09

2 Bedroom + Den | 3 Bath

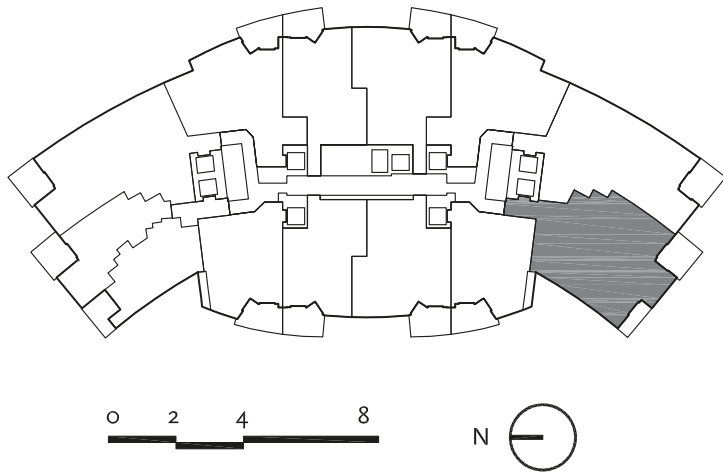
Total:	1,952 sq. ft.		181 m ²
Interior:	1,753 sq. ft.		163 m ²
Outdoor:	199 sq. ft.		18 m ²




 These drawings are conceptual only and are for the convenience of reference. They should not be relied upon as representations, express or implied, of the final detail of the residences. Units shown are examples of unit types and may not depict actual units. Stated square footages are ranges for a particular unit type and are measured to the exterior boundaries of the exterior walls and the centerline of interior demising walls and in fact vary from the area that would be determined by using the description and definition of the "Unit" set forth in the Declaration (which generally only includes the interior airspace between the perimeter walls and excludes interior structural components).

3 Bedroom + Den | 4 Bath

Total: 2,611 sq. ft. | 243 m²
Interior: 2,320 sq. ft. | 216 m²
Outdoor: 291 sq. ft. | 27 m²



 These drawings are conceptual only and are for the convenience of reference. They should not be relied upon as representations, express or implied, of the final detail of the residences. Units shown are examples of unit types and may not depict actual units. Stated square footages are ranges for a particular unit type and are measured to the exterior boundaries of the exterior walls and the centerline of interior demising walls and in fact vary from the area that would be determined by using the description and definition of the "Unit" set forth in the Declaration (which generally only includes the interior airspace between the perimeter walls and excludes interior structural components).

RESIDENCE F1 | 01
Reverse: Residence F2 | 11

3 Bedroom + Den | 4 Bath

Total: 2,578 sq. ft. | 240 m²
Interior: 2,376 sq. ft. | 221 m²
Outdoor: 202 sq. ft. | 19 m²

